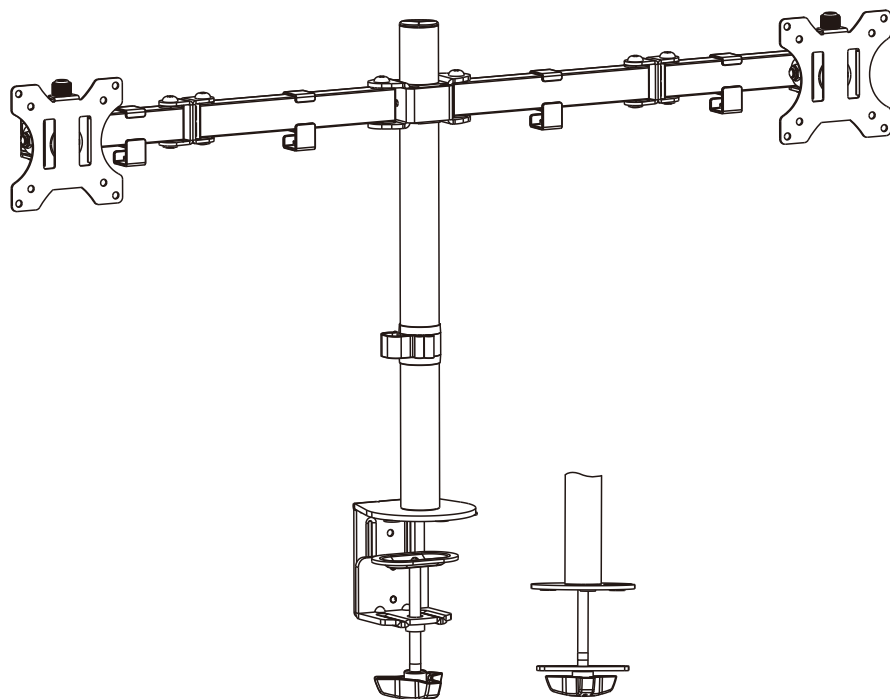


SOLOS

Installation Manual

Monitor Stand-Basic



SO-MS001-BK

75x75
100x100

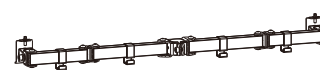
32"
MAX

8Kg x2
(17.6lbs x2)
RATED

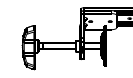
Parts List



A: VESA monitor mount(x2)



B: Arm(x1)



C: Desk clamp (x1)



D: Center pole(x1)



E: Pole cap (x1)



F: Hex key holder (x1)



G: Grommet top plate (x1)



H: Screw cap (x2)



I: Round head screw (x2)



J: Rubber pads(x5)



K: Flat head screw (x3)



L: Grommet plate (x1)



M: 4mm(x1)



N: 6mm(x1)



M4x12(x8)
M-A



M4x16(x8)
M-B



M5x12(x8)
M-C



M5x16(x8)
M-D



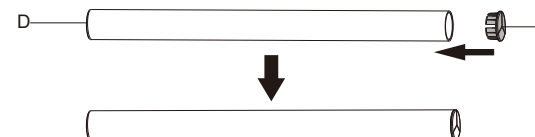
D(x8)
M-E



M-C(x8)

Spring Arm Installation

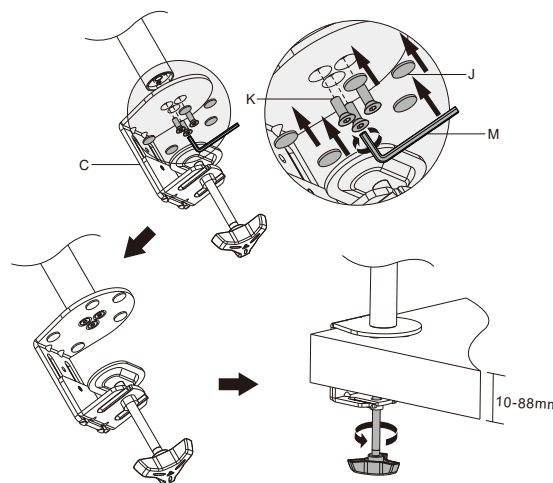
Step1



Insert cap(E) to center pole(D)

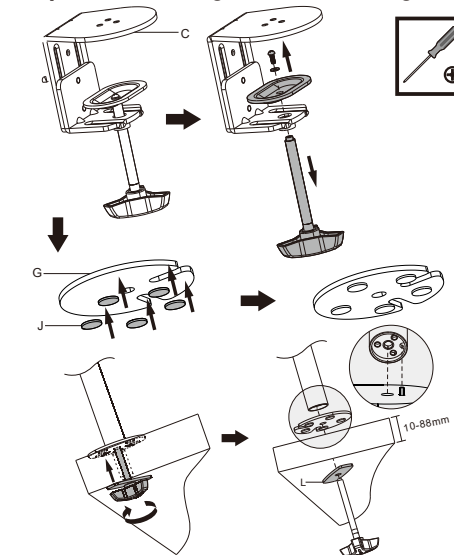
Step2

Option A-clamp mounting



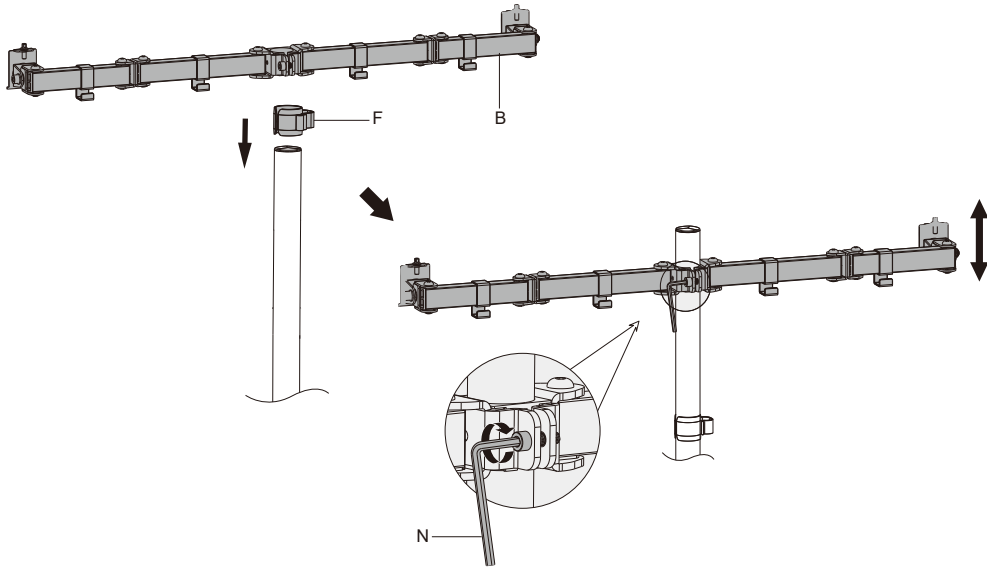
Insert three flat head screws(K) to attach desk clamp(C) to the center pole(D)

Option B-through hole mounting



After adding the rubber pads to the grommet top plate(G) and use the pre-installed screw to combine the center pole(D) to it

Step3



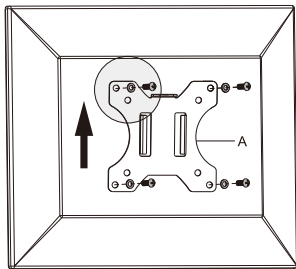
Attach the arm(B) to center pole(D) by using the 6mm hex alley to tighten the pre-installed screw

VESA Installation

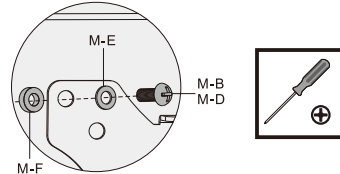
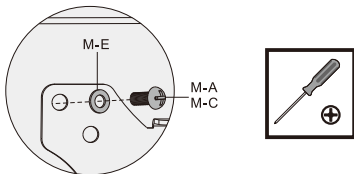
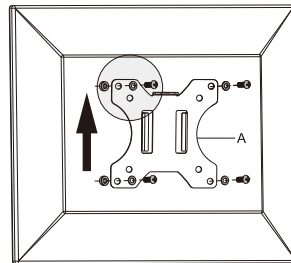
Step4



A



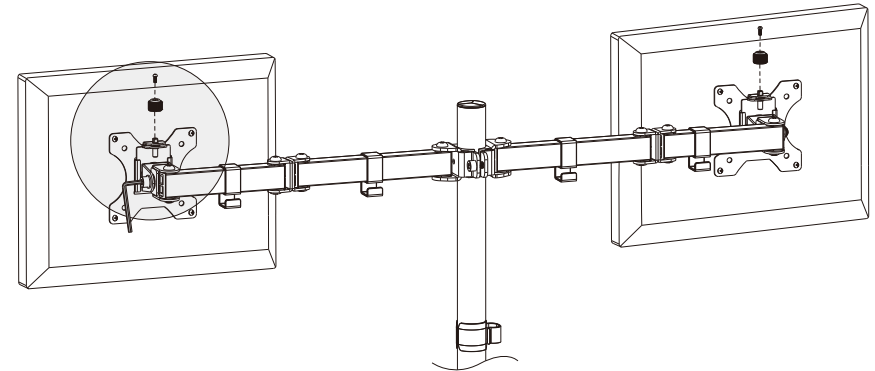
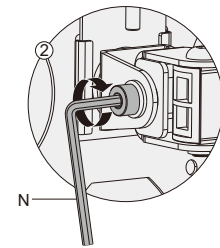
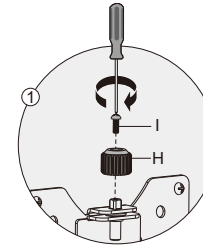
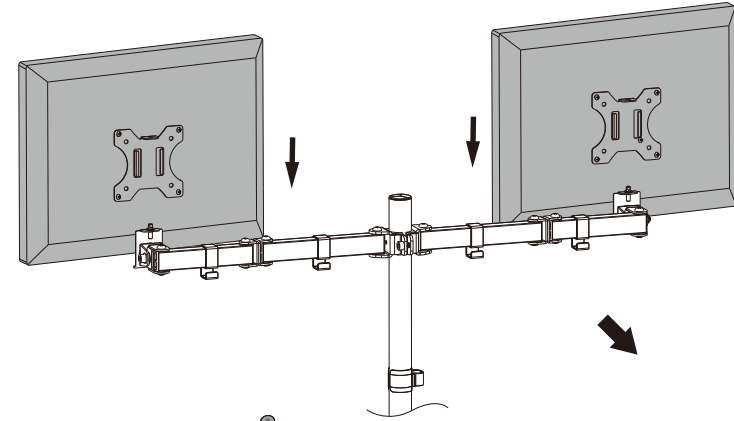
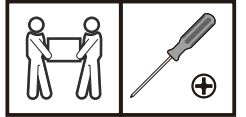
B



Use different set of screw according to your monitor size

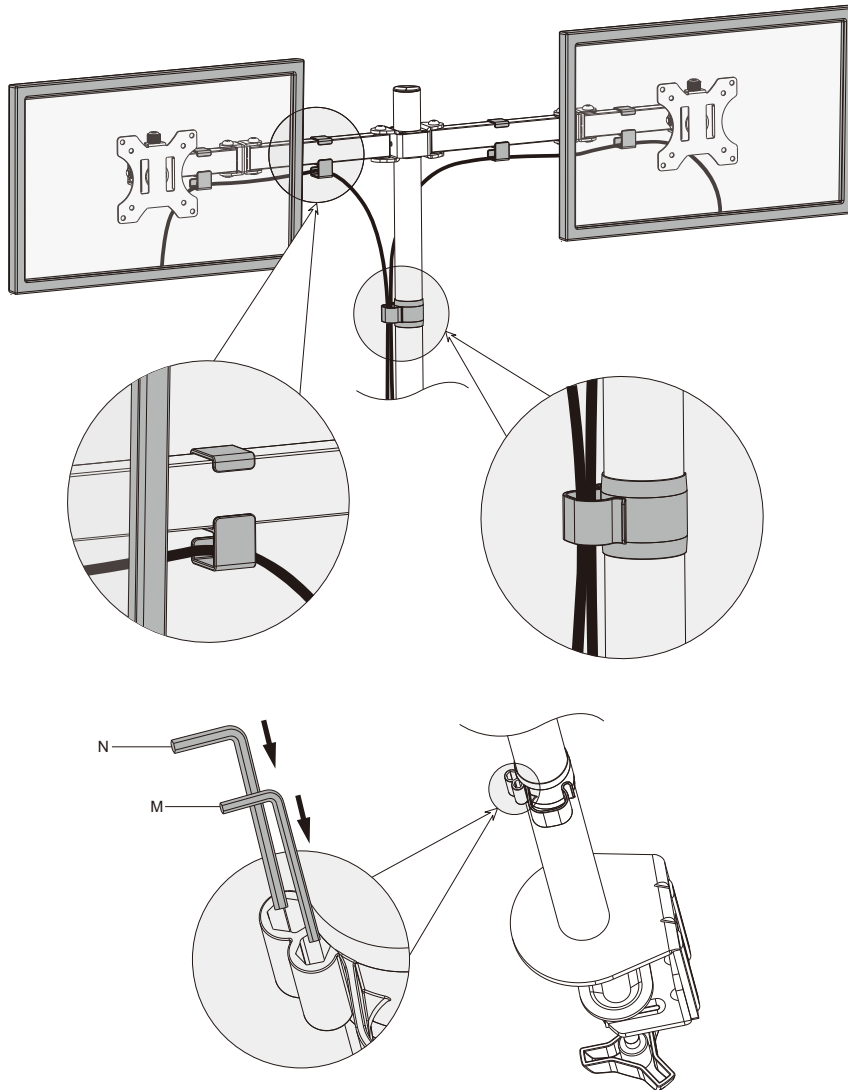
Step5

Tip: Attaching a monitor is a two-person job. Do not attempt to complete this task by yourself.



Snap monitors onto the arm and insert the round head screws(I) to tighten it

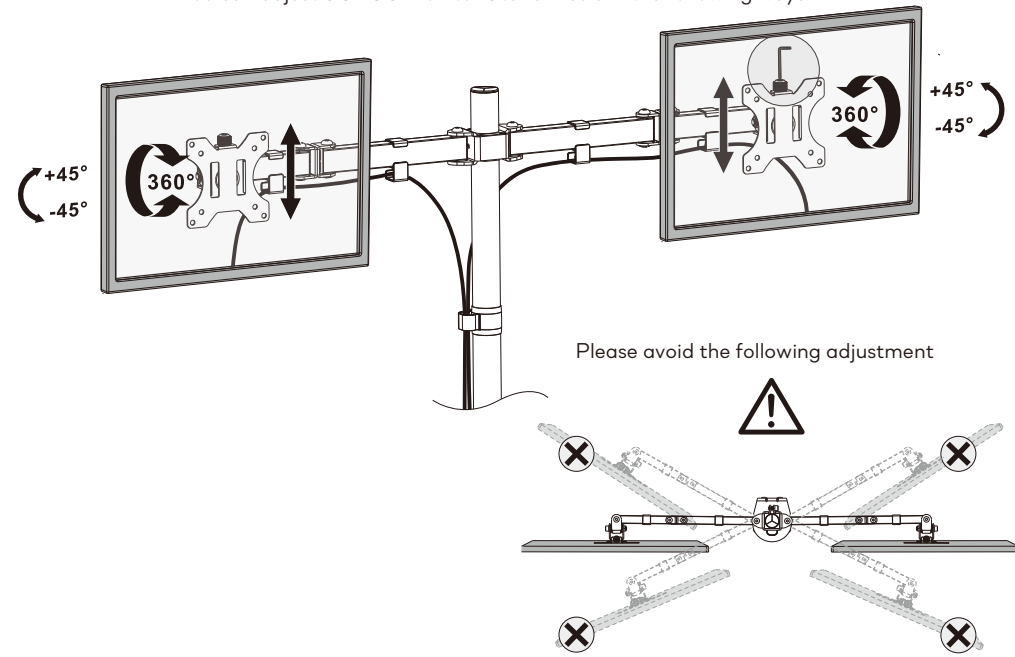
Step6



After managing your cables, store the hex keys (N/M) in the hex key holder (F) for future adjustment

Step7

You can adjust SOLOS Monitor Stand-Basic in the following ways:



CAUTION:

Use with products heavier than the rated weights indicated may result in instability, causing possible injury.

- Mounts must be attached as demonstrated in assembly instructions. Improper installation may result in damage or serious personal injury.
- Safety gear and proper tools must be used. This product should only be installed by professionals.
- Make sure that your supporting surface will safely support the combined weight of the equipment and all attached hardware and components.
- Use the mounting screws provided and **DO NOT OVER TIGHTEN** mounting screws.
- This product contains small items that could be a choking hazard if swallowed. Keep these items away from children
- This product is intended for indoor use only. Using this product outdoors could lead to product failure and personal injury.

IMPORTANT:

Ensure that you have received all parts according to the parts list prior to installation. If any parts are missing or faulty, please contact our website for a replacement.

+1 510 651 2205

www.solos-it.com

sales@solos-it.com