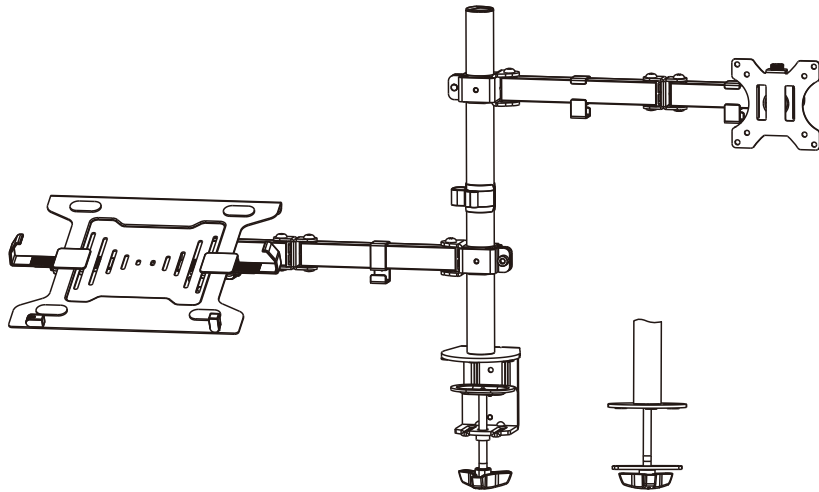


## Monitor Stand-Laptop



SO-MSL001-BK



75x75  
100x100

32" MAX

10"-15.6"

TV  
8Kg  
(17.6lbs)  
RATED

PC  
4.5Kg  
(9.9lbs)  
RATED

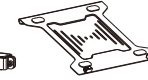
### Parts List



A: VESA monitor mount(x2)



B: L bracket (x1)



C: Laptop tray (x1)



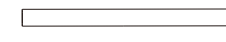
D: Laptop tray guard (x2)



E: Laptop tray guard mount(x2)



F: Desk clamp (x1)



G: Center pole (x1)



H: Pole cap (x1)



I: Hex key holder (x1)



J: Grommet top plate (x1)



K: Grommet plate (x1)



L: Round head screw (x4)



M: Hub screw (x1)



N: Flat head screw (x3)



O: 4mm (x1)  
Hex key



P: 6mm (x1)  
Hex key



Q: Rubber pads(x4)



M4x12(x4)  
M-A



M4x16(x4)  
M-B



M5x12(x4)  
M-C



M5x16(x4)  
M-D



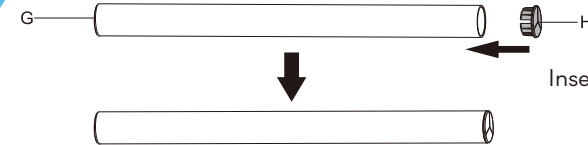
D5(x4)  
M-E



M-F(x4)

### Spring Arm Installation

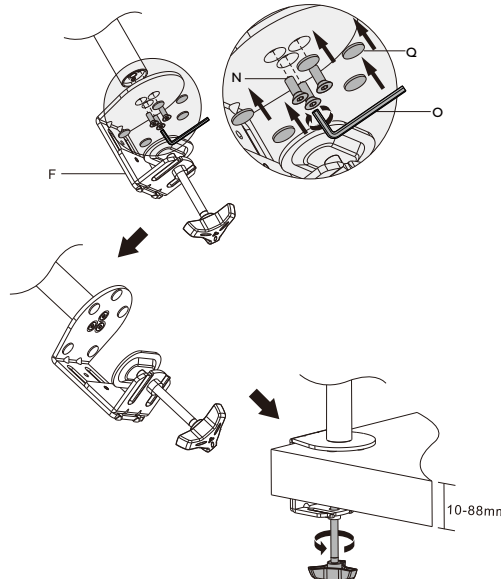
#### Step1



Insert cap(H) to center pole(G)

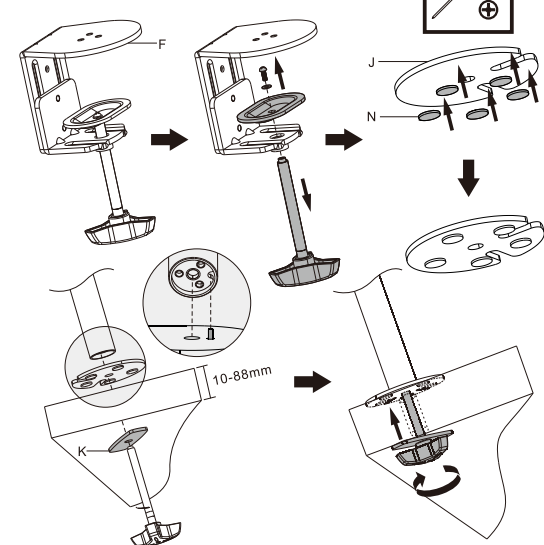
#### Step2

##### Option A-clamp mounting



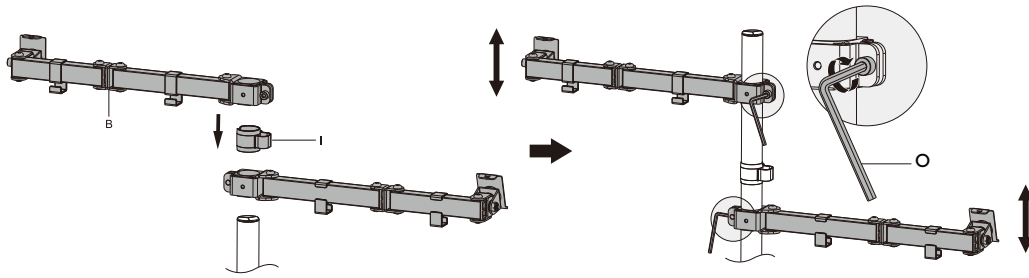
Insert three flat head screw(P) to attach desk clamp(F) to the center pole(G)

##### Option B-through hole mounting



After adding the rubber pads to the grommet top plate(J) and use the pre-installed screw to combine the center pole(G) to it

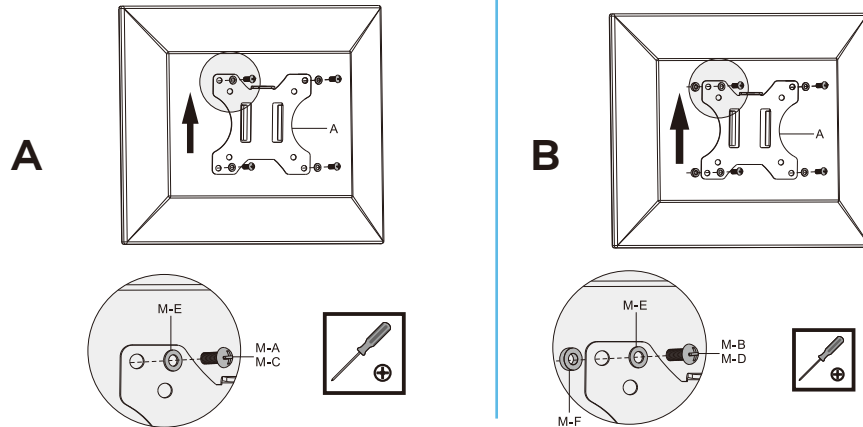
### Step3



Attach the arm(B) to center pole(G) by using the 6mm hex alley(O) to tighten the pre-installed screw

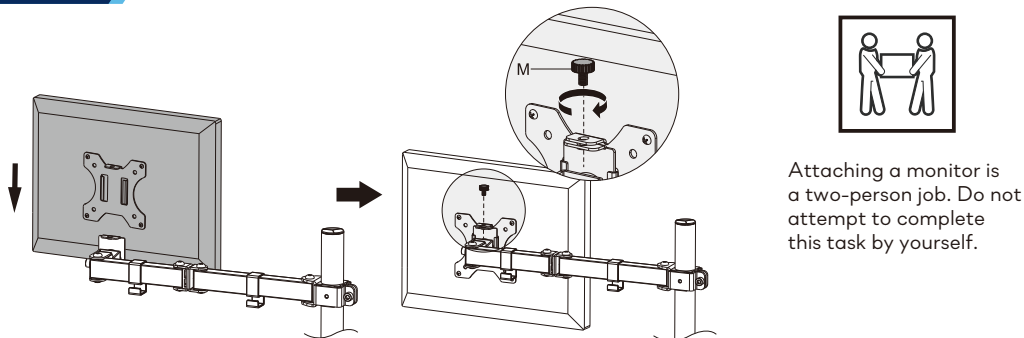
## VESA Installation

### Step4



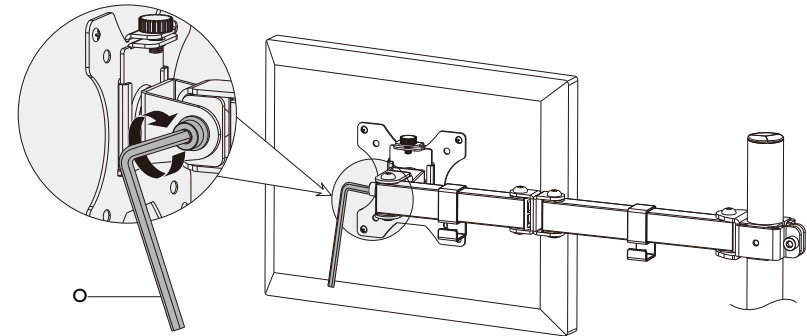
Using different set of screws according to your monitor size

### Step5



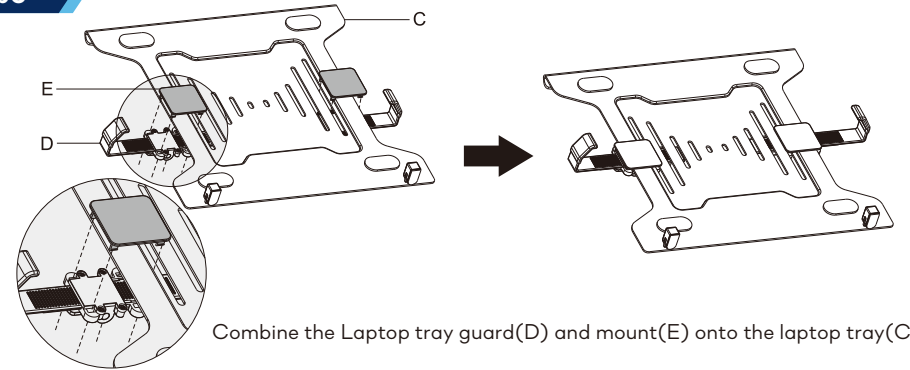
Snap your monitor onto the arm and insert the round head screws(M) to tighten it

### Step6



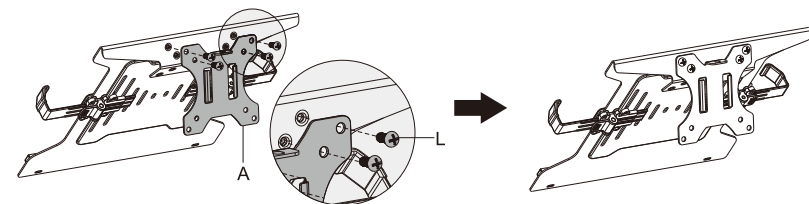
Use the hex key(O) to tighten or loose the screw after you find the perfect position for your monitors

### Step6



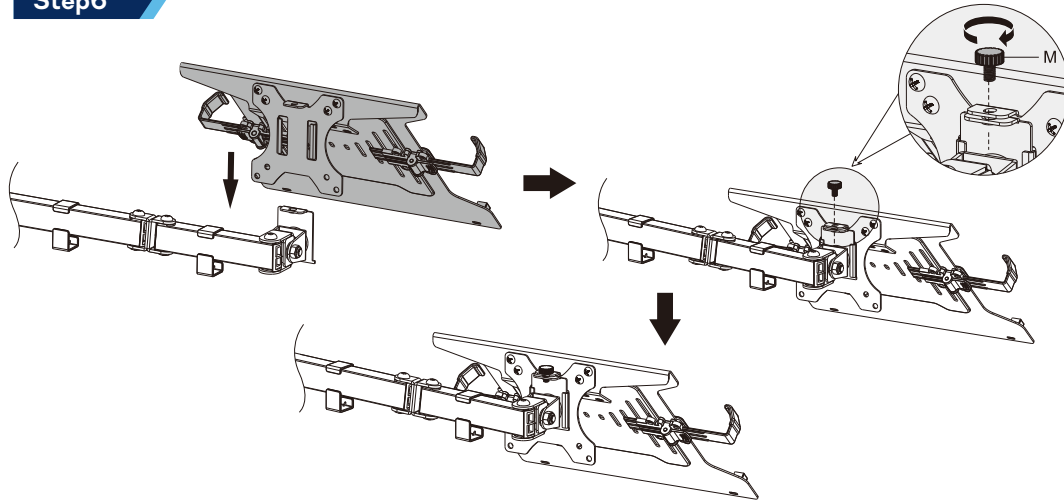
Combine the Laptop tray guard(D) and mount(E) onto the laptop tray(C)

### Step6



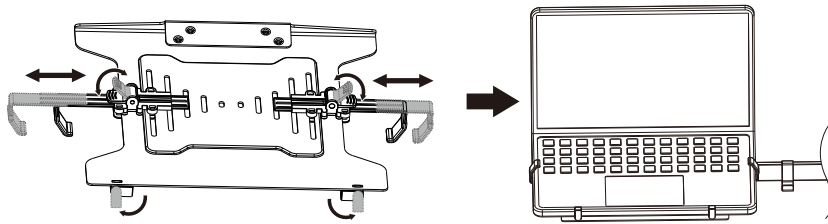
Add the VESA monitor mount(A) to the laptop tray and use round head screws to(A) tighten them

## Step6



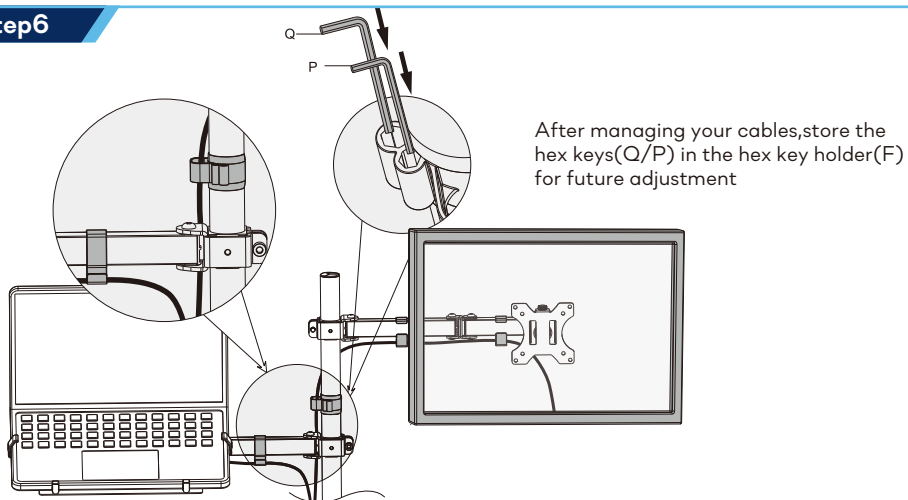
Snap the laptop tray onto the arm and insert the round hub screw(M) to tighten it

## Step6



Snap your laptop onto the tray and use the laptop tray guard to secure the position

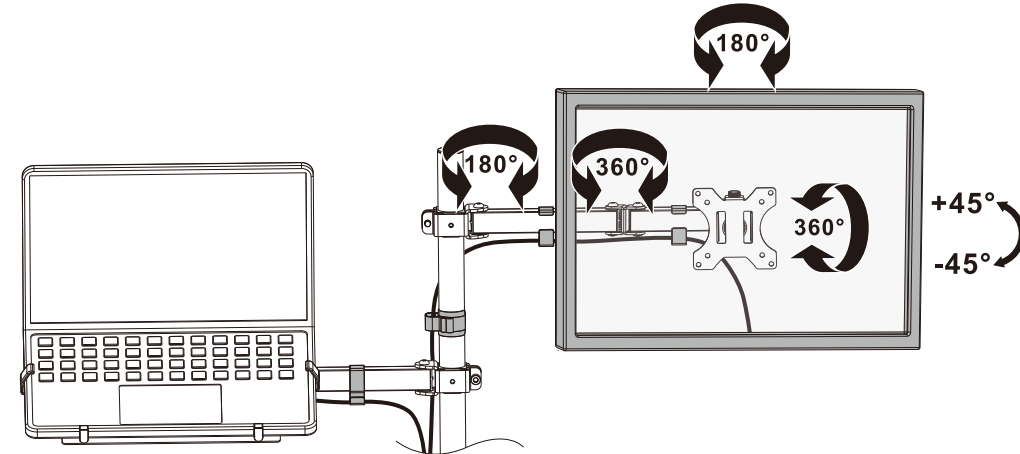
## Step6



After managing your cables,store the hex keys(Q/P) in the hex key holder(F) for future adjustment

## Step6

You can adjust SOLOS Monitor Stand-Premium in the following ways:



### CAUTION

Use with products heavier than the rated weights indicated may result in instability, causing possible injury.

- Mounts must be attached as demonstrated in assembly instructions. Improper installation may result in damage or serious personal injury.
- Safety gear and proper tools must be used. This product should only be installed by professionals.
- Make sure that your supporting surface will safely support the combined weight of the equipment and all attached hardware and components.
- Use the mounting screws provided and DO NOT OVER TIGHTEN mounting screws.
- This product contains small items that could be a choking hazard if swallowed. Keep these items away from children
- This product is intended for indoor use only. Using this product outdoors could lead to product failure and personal injury.

### IMPORTANT:

Ensure that you have received all parts according to the parts list prior to installation. If any parts are missing or faulty, please contact our website for a replacement.

+1 510 651 2205

[www.solos-it.com](http://www.solos-it.com)

[sales@solos-it.com](mailto:sales@solos-it.com)